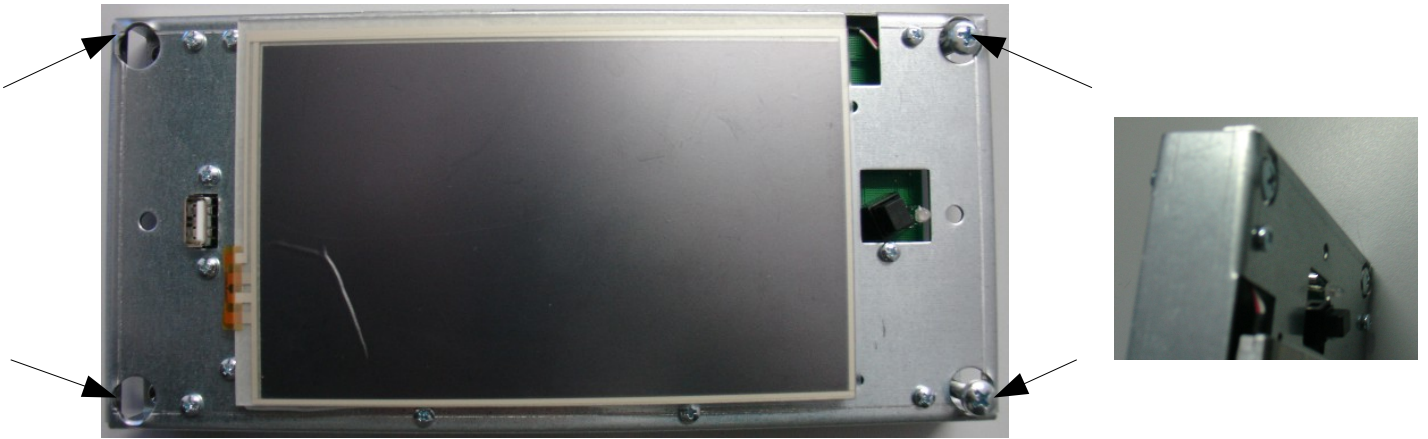
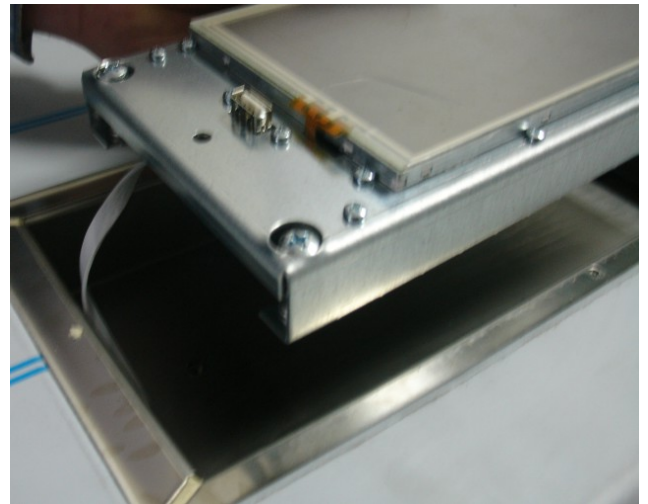
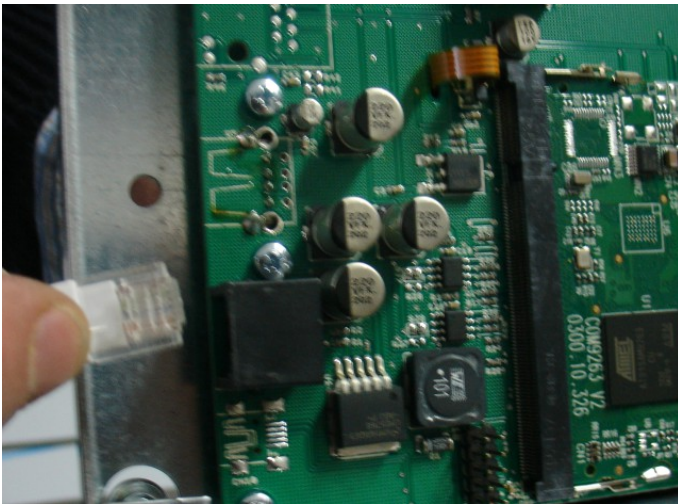


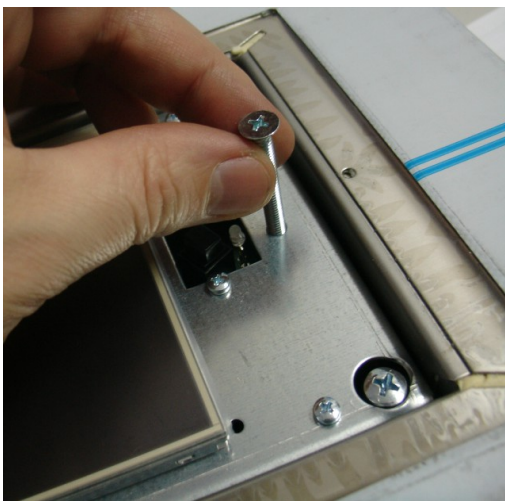
# VISION touch-screen installation



1 – Insert the 4 screws M5x25 and fix them slightly.



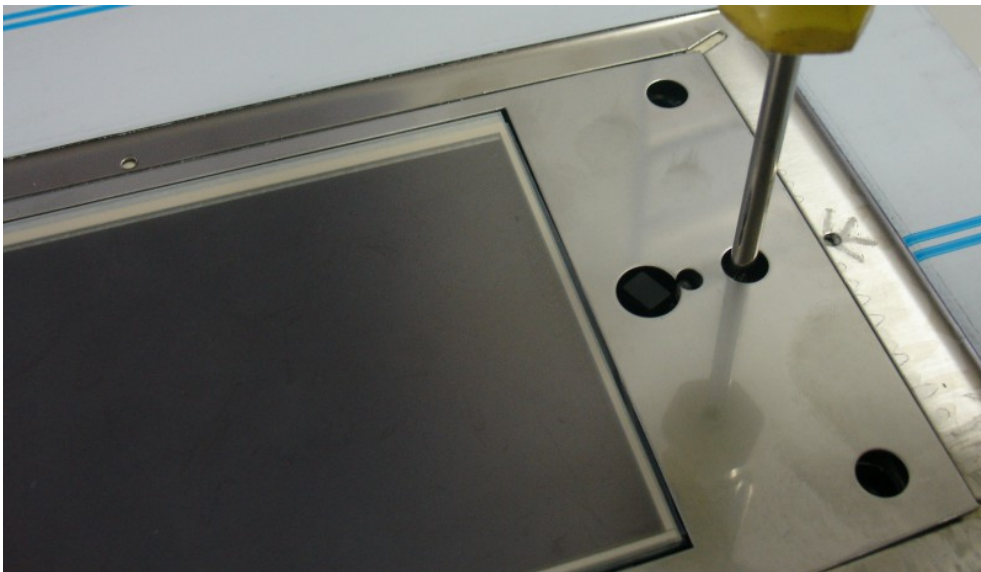
2 – Insert the connector and house the screen in the door.



3 – Fix the screen with the long screws and place the cover plate. (stop the plate with scotch tape during this operation).



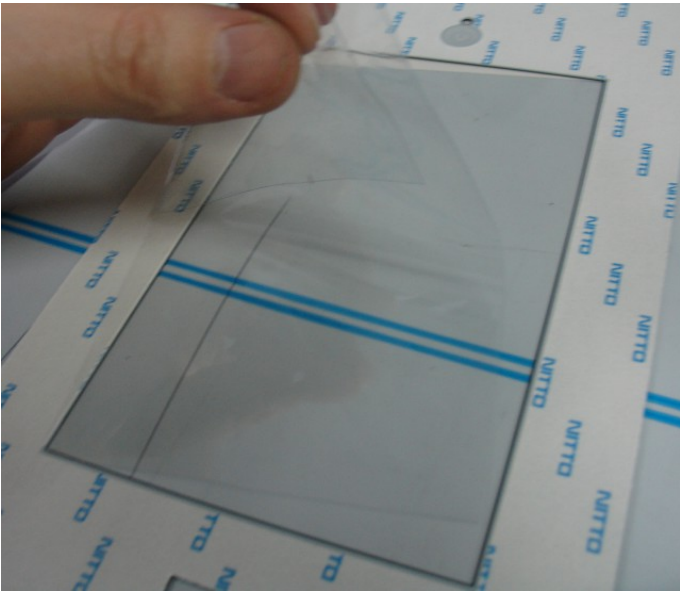
4 – By adjusting the 4 screws in the corners, line up the surface of the screen with the edges of the cover plate.



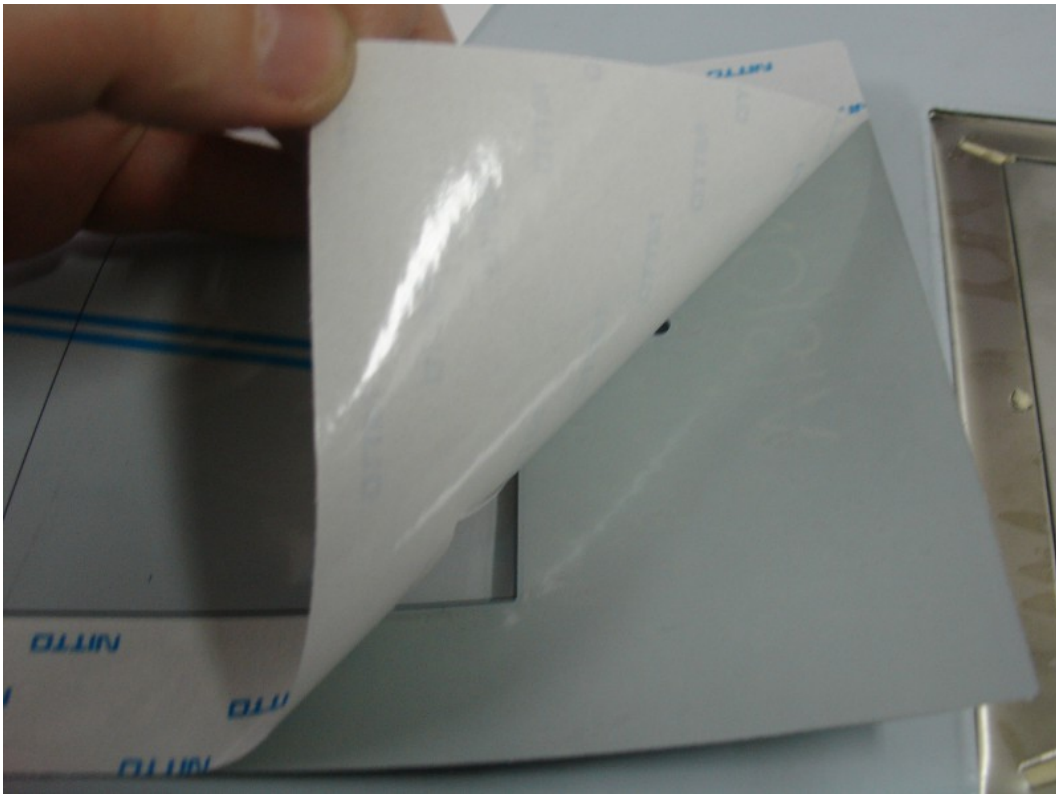
5 – Fix the screen in the final position with the 2 screws. Check that the alignment does not change. If required loosen the 2 central screws and adjust the position again with the screws in the corners.



6 – Place the polycarbonate cover and verify the correct alignment of the power switch, LED and USB.



7 – Remove the protection film from the polycarbonate cover and from the touch screen.



8 – Remove the protection layer on the adhesive side of the cover and attach it starting from the top downwards.